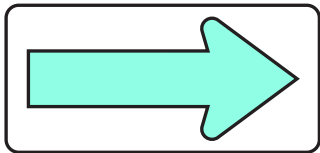




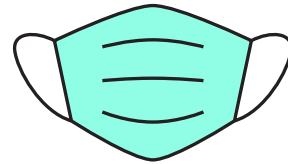
Guidance for Buffet Style Dining



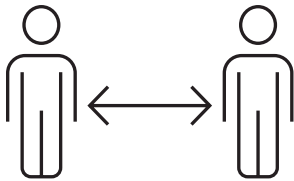
Provide hand sanitizer as well as appropriate signage that instructs patrons to perform hand hygiene before and after attending buffet.



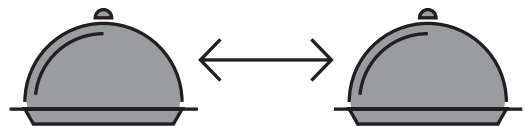
Create a one way direction, with one entrance and one exit.



Ensure patrons wear a mask when attending the buffet.



Visual cues and signage should be posted to ensure physical distancing.



Where possible ensure stations are at least 2 metres from each other.



Clean and disinfect service areas regularly and when they become soiled.



Provide plates/utensils at patron's tables rather than at the buffet table for everyone to potentially touch.